

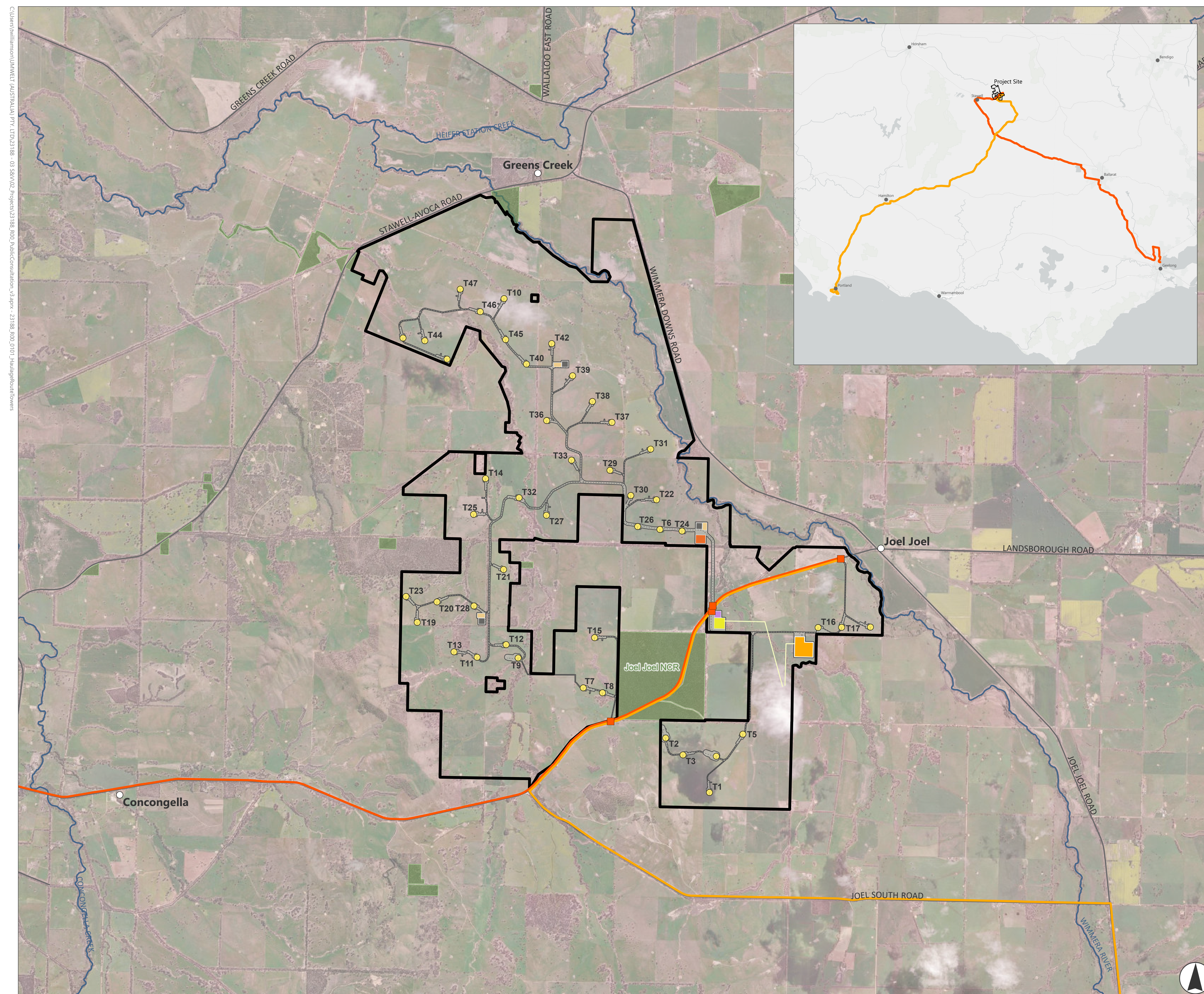
# Transport and Access

## WATTA WELLA RENEWABLE ENERGY PROJECT

Wind turbine components for the Watta Wella Renewable Energy Project will be transported to site from either the port of Geelong or Portland.

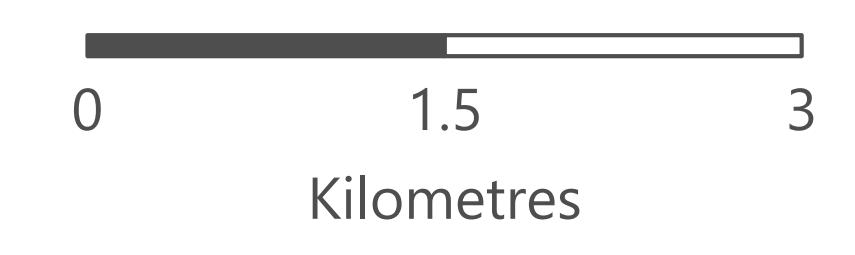
Modifications to some intersections will be required to accommodate the larger components, especially the blades.

The final haulage route will be selected to minimise impact on highways and local roads. There are multiple options for utilising local roads for deliveries, however it is expected that primary access will be via Landsborough Rd, Joel South Rd and Joel Joel Rd.



**FIGURE 1.1**  
Haulage Route - Towers

- Legend**
- Access Points
  - Township
  - Roads
  - Major Watercourse
  - Overhead Transmission Line 220kV
  - ▭ Project Boundary
  - ▭ Parks and Reserves
  - ▭ Disturbance Footprint
  - Tower Haulage Route Options**
  - Port of Geelong Haulage Route
  - Port of Portland Haulage Route
  - Infrastructure Layout**
  - ▭ Concrete Batch Plant
  - ▭ Construction Compound
  - ▭ Laydown Area
  - ▭ Operation & Maintenance
  - ▭ Substation Area
  - ▭ BESS Substation
  - Access Tracks
  - Turbine



Scale 1:50,000 at A4  
GDA2020 MGA Zone 54

This document and the information are subject to Terms and Conditions and Umwelt (Australia) Pty Ltd ("Umwelt") Copyright in the drawings, information and data recorded ("the information") is the property of Umwelt. This document and the information are solely for the use of the authorized recipient and this document may not be used, copied or reproduced in whole or part for any purpose other than that which it was supplied by Umwelt. Umwelt makes no representation, undertakes no duty and accepts no responsibility to any third party who may use or rely upon this document or the information.  
APPROVED FOR AND ON BEHALF OF Umwelt